



Keeps Pets in a Good Place .

800-428-8560  
midwesthomes4pets.com  
P.O. Box 1031  
Muncie, Indiana 47308



Assembly Instructions for Model Numbers **2929SW-3, 2929SW-6, 2929SW-11; 2939SW-3, 2939SW-6, 2939SW-11; 2929SG-3, 2929SG-6, 2929SG-11; 2939SG-3, 2939SG-6, 2939SG-11**

## IMPORTANT INFORMATION

Fits Gates **2929SW, 2939SW, 2929SG, 2939SG and 2929SG-WD, 2939SG-WD**

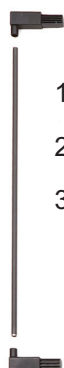
Unwrap and remove all parts from the box. Keep the box and packing material until the product is assembled. In case of return or exchange, failure to return product in similar condition as received could result in limited reimbursement. Please save sales receipt as proof of purchase for warranty purposes. Check to ensure you have all the parts below. If you discover any parts are missing, immediately call our toll-free service helpline at 1-800-428-8560 (Monday - Friday 9 a.m. to 4 p.m. EST) or at [info@midwesthomes4pets.com](mailto:info@midwesthomes4pets.com). To protect the finish of your gate use only mild, non-abrasive cleaners and water. Any course scrubbing or abrasive materials could damage the finish.

**WARNING: This gate is ONLY FOR USE WITH PETS.**  
**This gate is NOT to be used for children. Do not place on top of stairs.**  
**Read and follow all instructions carefully.**

- Keep the instructions for future reference.
- Improper installation could result in gate becoming unstable or dislodged from the opening.
- Ensure the gate is attached between two clean, structurally sound surfaces.
- Do not remove the safety notices; you may not always be the user.
- Always make sure the extensions are securely attached to the gate before using.
- Regularly check tension knobs and bolts to make sure the gate is securely in place.
- Never use more than two extensions per gate! Never install two extensions on the same side of the gate.
- To prevent falls never use at top of stairs.
- Use only with locking mechanism securely engaged.
- Do not use if any components are missing or damaged.
- Keep small parts away from pets and children.

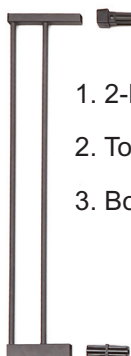
## PARTS IDENTIFICATION

3" Extension



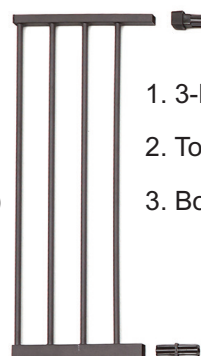
1. 1-Bar Extension Rod (1)
2. Top Plastic Connector (1)
3. Bottom Plastic Connector (1)

6" Extension



1. 2-Bar Extension Rod (1)
2. Top Plastic Connector (1)
3. Bottom Plastic Connector (1)

11" Extension



1. 3-Bar Extension Rod (1)
2. Top Plastic Connector (1)
3. Bottom Plastic Connector (1)

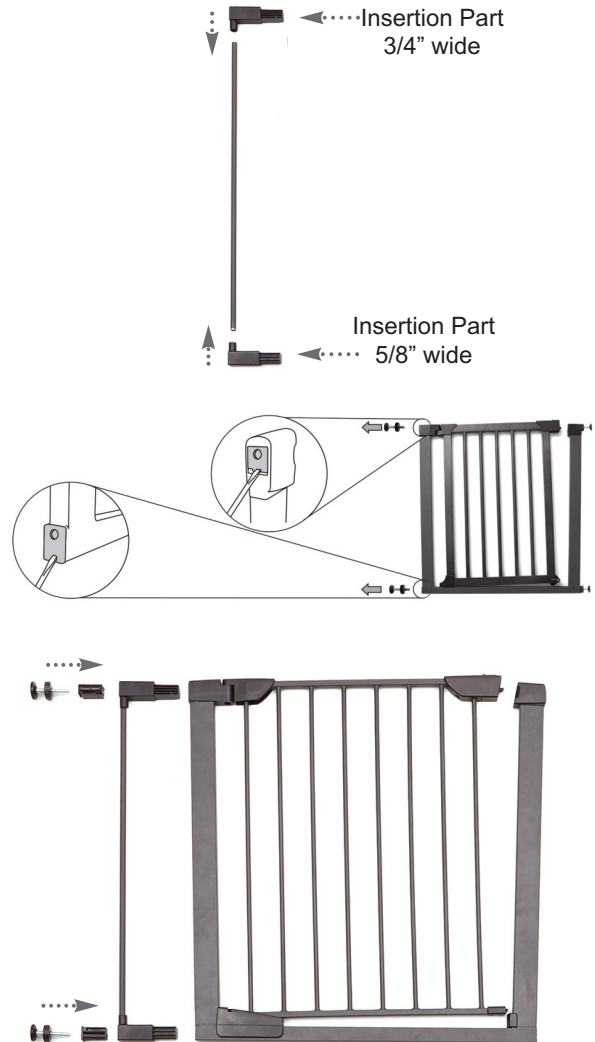


Assembly and Demonstration Video

# ASSEMBLY INSTRUCTIONS

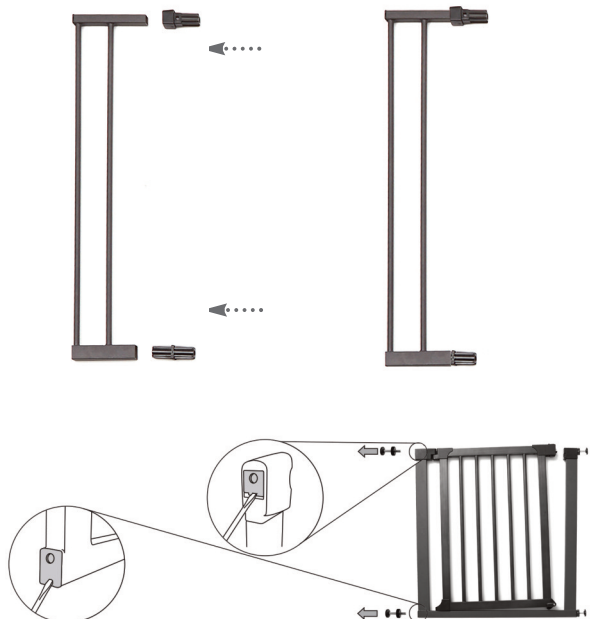
## Instructions for 3" Gate Extension

1. Begin by determining which extension or combination of extensions is required for your doorway or opening. Attach the Top Plastic Connector and Bottom Plastic Connector to the top and bottom of the Extension Rod. NOTE: The insertion point of the Top Connector is  $\frac{3}{4}$ " wide, and the insertion point of the Bottom Connector is  $\frac{5}{8}$ " wide.
2. Using a flat head screwdriver, remove the Top Plastic Insert and the Bottom Plastic Insert from the gate frame as shown.
3. Connect the Extension Rod to the gate frame as shown.
4. Install the Top Plastic Insert and Bottom Plastic Insert that were removed in Step 2 into the ends of the extension bar's Top and Bottom Plastic Connector.
5. Once the required extensions are attached to the gate, insert the 4 Threaded Spindle Bolts into the ends of the extensions you just assembled and follow the instructions from the original pet gate starting from Step 1.



## Instructions for 6" and 11" Gate Extensions

1. Begin by determining which extension or combination of extensions is required for your doorway opening. Attach the Top Plastic Connector and Bottom Plastic Connector to the top and bottom of the Extension Rod.
2. Using a flat head screwdriver, remove the Top Plastic Insert and the Bottom Plastic Insert from the gate frame as shown.

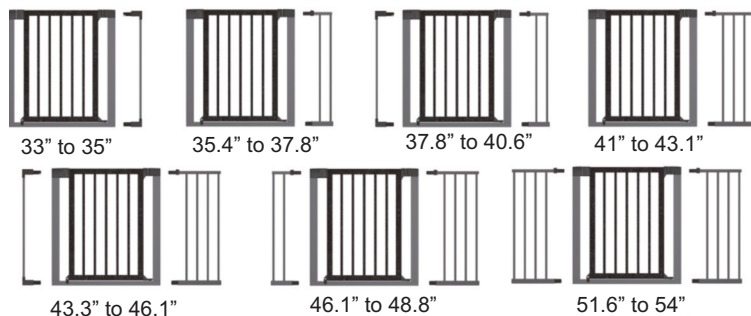


3. Connect the Extension Rod to the gate frame as shown.
4. Install the Bottom Plastic Insert that was removed in Step 2 into the bottom end of the extension bar.
5. Once the required extensions are attached to the gate, insert the 4 Threaded Spindle Bolts into the ends of the extensions you just assembled and follow the instructions from the original pet gate starting from Step 1.



### Extension Guide

This gate fits openings 29 inches wide (without the included extensions) to 38 inches wide (with the included 3-inch extensions). If you have an application that requires additional extensions, please contact the retailer from which you purchased your gate. MidWest offers the following extension sizes for your gate (sold separately): 3-inch, 6-inch, and 11-inch. The maximum width that can be achieved is 54 inches.



### LIMITED MANUFACTURER'S WARRANTY

1. For one (1) year from the date of original purchase, MIDWEST Homes For Pets ("MIDWEST") warrants to the purchaser of this pet gate that, should it prove defective by reason of improper workmanship and/or material, MIDWEST will repair or replace, at its option, any defective part of the pet gate, without charge for the part or for shipping. Replacement parts are warranted for the remainder of the original period.
2. **THIS WARRANTY DOES NOT COVER** defects in the wood, wire, or hardware caused by any animal, any physical abuse to or misuse of the pet gate, any damage caused by the original purchaser or any third party, or any defects arising or discovered more than one (1) year from the original retail purchase date.
3. **STEPS TO OBTAIN WARRANTY SERVICE:**
  - A. The purchaser must call MIDWEST's HELPLINE, 800-428-8560, to report the alleged defect to a customer service representative or obtain missing parts.
  - B. The customer service representative will determine if the defect is covered by this warranty, and if it is, will authorize and instruct the purchaser in how to obtain corrective action.
  - C. MIDWEST may require the purchaser to present the sales receipt or other proof of purchase prior to authorizing any return or replacement. No returns or replacements will be permitted without proper authorization. If a return or replacement is authorized, you may be requested to return the item to MIDWEST or to make the item available for pick-up by MIDWEST.
4. **ANY EXPRESS WARRANTY NOT PROVIDED IN THIS WARRANTY DOCUMENT, AND ANY REMEDY FOR BREACH OF CONTRACT THAT, BUT FOR THIS PROVISION, MIGHT ARISE BY IMPLICATION OR OPERATION OF LAW, IS HEREBY EXCLUDED AND DISCLAIMED. THE IMPLIED WARRANTIES OF MERCHANTABILITY AND OF FITNESS FOR ANY PARTICULAR PURPOSE ARE EXPRESSLY LIMITED TO A TERM OF ONE (1) YEAR. SOME STATES DO NOT ALLOW LIMITATIONS ON HOW LONG AN IMPLIED WARRANTY LASTS, SO THE ABOVE LIMITATIONS MAY NOT APPLY TO YOU.**
5. **UNDER NO CIRCUMSTANCES SHALL MIDWEST BE LIABLE TO PURCHASER OR ANY OTHER PERSON FOR ANY SPECIAL, INCIDENTAL OR CONSEQUENTIAL DAMAGES, WHETHER ARISING OUT OF BREACH OF WARRANTY, BREACH OF CONTRACT OR OTHERWISE, SOME STATES DO NOT ALLOW THE EXCLUSION OR LIMITATIONS OF INCIDENTAL OR CONSEQUENTIAL DAMAGES, SO THE ABOVE LIMITATIONS OR EXCLUSION MAY NOT APPLY TO YOU.**
6. This warranty gives you specific legal rights, and you may also have other rights which vary from state to state.

### For a Complete Listing of Products

Crates • Exercise Pens • Pet Beds  
Feed Bowls • Carriers • Kennels . . .

**Come Visit Our Website**  
**[midwesthomes4pets.com](http://midwesthomes4pets.com)**

