



72-in Faux Fur Cat Tree & Condo Product Manual

SKU# 92257, 101809

44 IN L X 27.5 IN W X 72 IN H

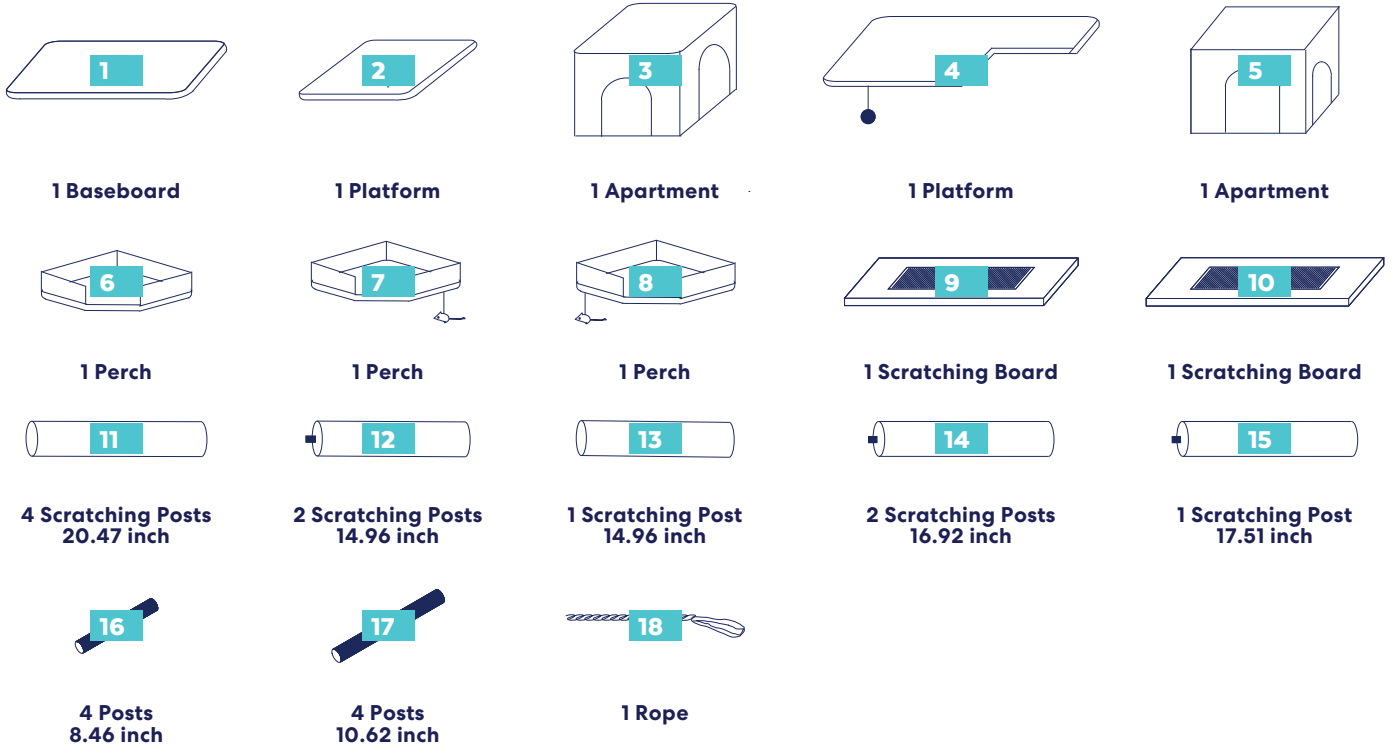
111.5 CM L X 69.8 CM W X 182.8 CM H

Assembly Instructions

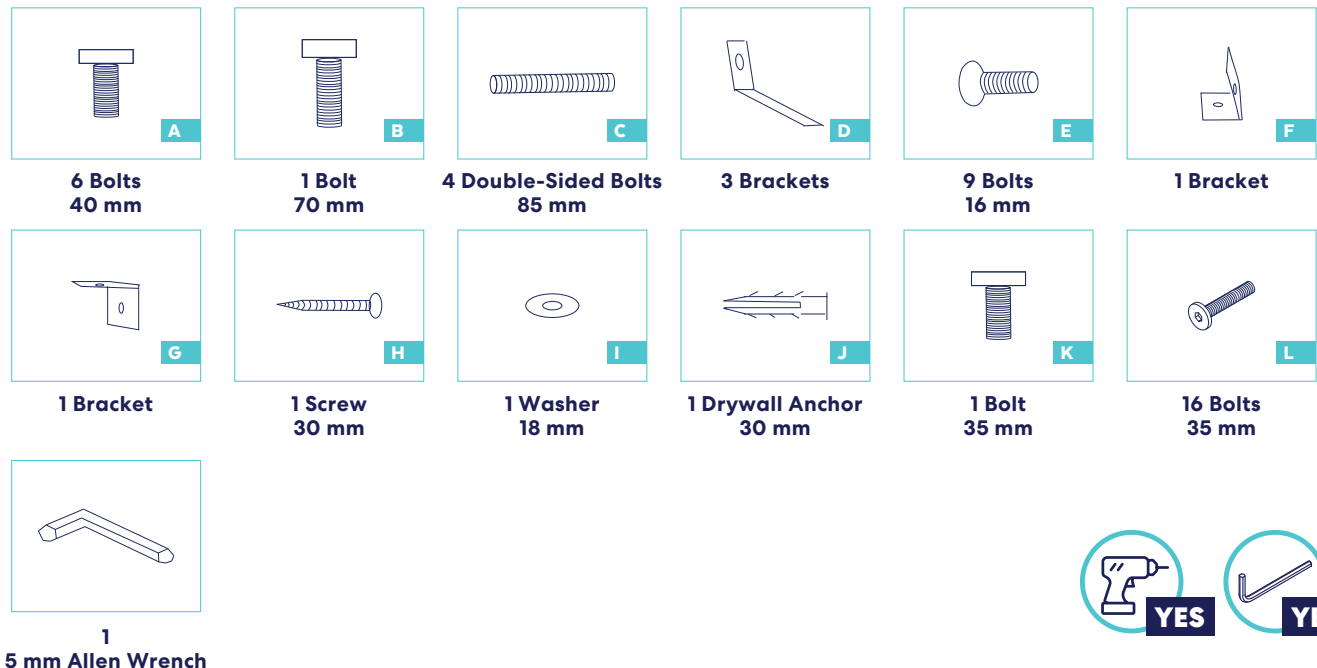
Please read through all instructions before starting.

Parts Included

Prior to assembly, please be sure to identify and sort all parts shown below.



Accessories

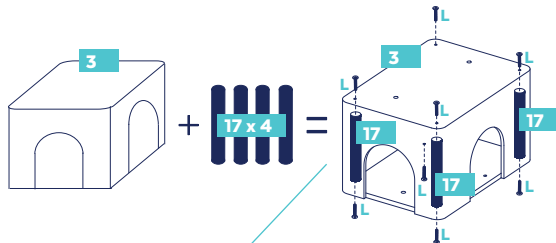


Call 1.800.672.4399 for questions

Assembly Instructions

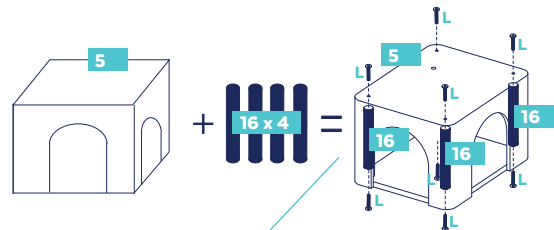
Please Read Through All Instructions Before Starting

Step 1.



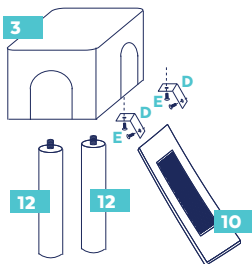
For easier assembly, insert all 4 posts inside to frame the apartment from each corner. Use the allen wrench to locate and align the holes between apartment board and post, then loosely attach the screws at both ends without completely tightening. Repeat for all corners. Then, tighten all 8 screws to finish apartment assembly.

Step 2.

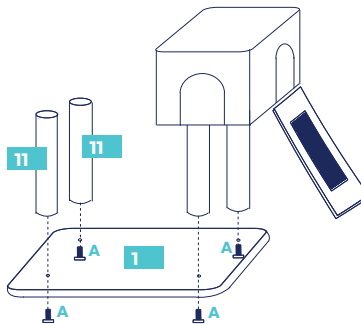


For easier assembly, insert all 4 posts inside to frame the platform from each corner. Use the allen wrench to locate and align the holes between platform board and post, then loosely attach the screws at both ends without completely tightening. Repeat for all corners. Then, tighten all 8 screws to finish platform assembly.

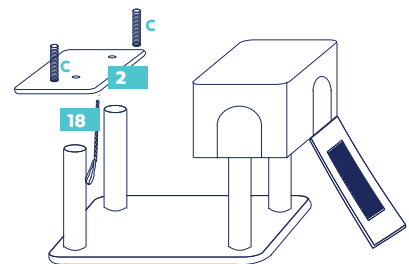
Step 3.



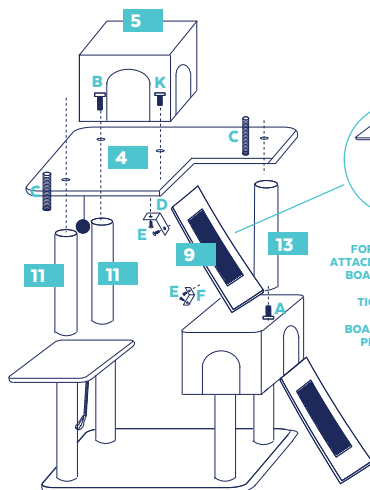
Step 4.



Step 5.

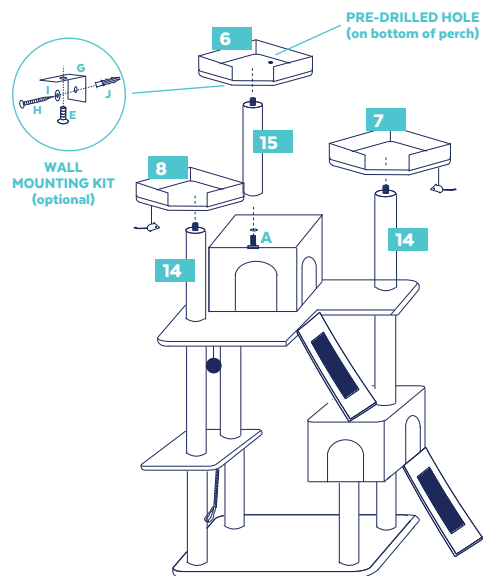


Step 6.



FOR EASIER ASSEMBLY, LOOSELY ATTACH BRACKETS TO THE SCRATCHING BOARD BY INSERTING THE SCREWS WITHOUT COMPLETELY TIGHTENING. THEN, ALIGN THE SCRATCHING BOARD WITH THE APARTMENT AND PLATFORM AND SECURE IT BY TIGHTENING THE SCREWS.

FINISHED ASSEMBLY



Call 1.800.672.4399 for questions

Warning & Cautions

Please read and follow all warnings and instructions to avoid injury or property damage.

This is not a toy, not for use with children.

Keep all small parts away from children / pets to avoid choking hazards.

For cat use only.

Should only be operated by a responsible adult.

Keep all tools and instructions in a safe place for future reference.

Follow the instructions carefully and make sure you've completed each step.

Cat tree should be placed on a flat level surface.

Never climb, rock, shake, step or hang on the cat tree.

Check your cat tree often for loose screws or parts that might need re-tightening.

If your cat tree gets torn or damaged, please discard it.

The product photo may vary slightly from your fully assembled cat tree as this product is continually being enhanced.

Cleaning & Instructions

Spot clean stains and vacuum fur (using small handheld or attachment) when necessary.

Questions?

Call our friendly customer service anytime.

We're here 24/7 at 1.800.672.4399

Warning & Cautions

Please read and follow all warnings and instructions to avoid injury or property damage.

This is not a toy, not for use with children.

Keep all small parts away from children / pets to avoid choking hazards.

For cat use only.

Should only be operated by a responsible adult.

Keep all tools and instructions in a safe place for future reference.

Follow the instructions carefully and make sure you've completed each step.

Cat tree should be placed on a flat level surface.

Never climb, rock, shake, step or hang on the cat tree.

Check your cat tree often for loose screws or parts that might need re-tightening.

If your cat tree gets torn or damaged, please discard it.

The product photo may vary slightly from your fully assembled cat tree as this product is continually being enhanced.

Cleaning & Instructions

Spot clean stains and vacuum fur (using small handheld or attachment) when necessary.

Questions?

Call our friendly customer service anytime.

We're here 24/7 at 1.800.672.4399