



## Tension Mounted Plastic Dog Gate

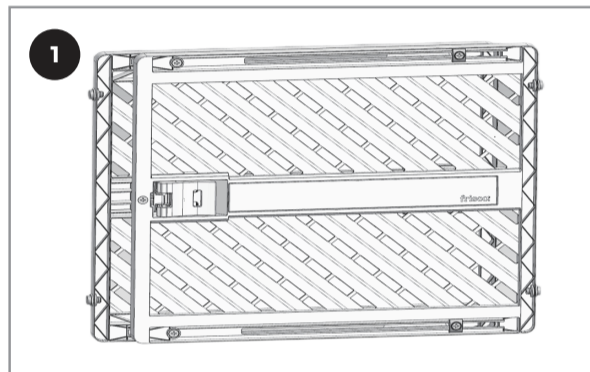
Sku# 970230

Recommended for small and medium sized dogs, senior or non-jumpers.

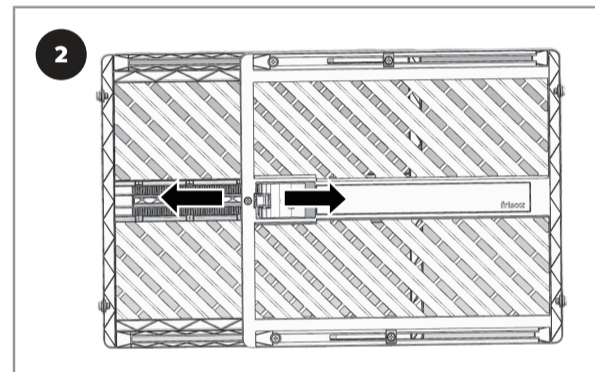
Please Read Through All Instructions Before Starting

# Assembly Instructions

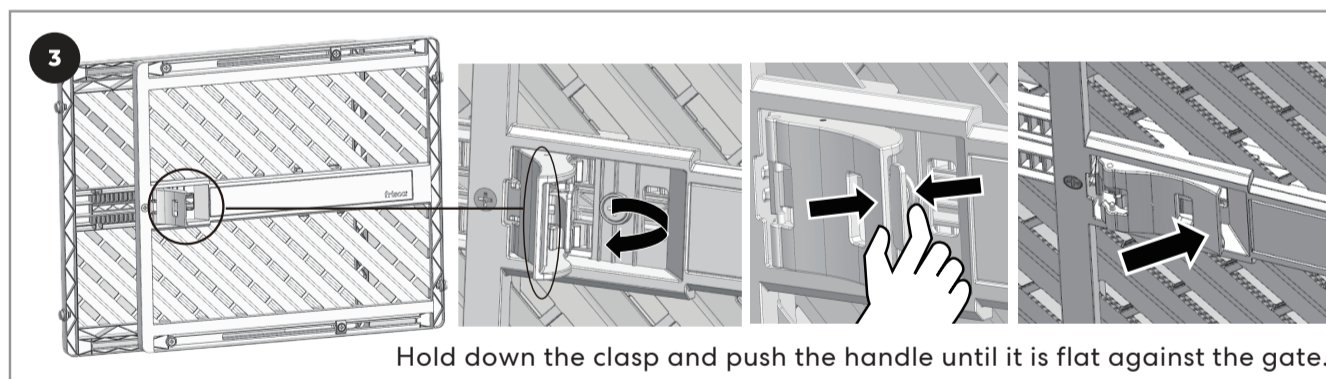
## How to install the gate



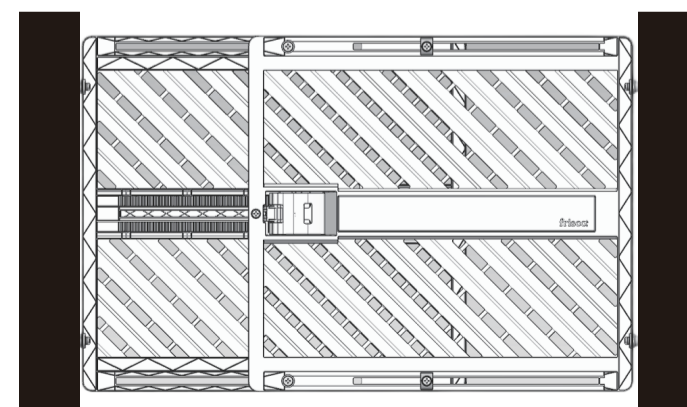
**STEP 1.**  
Open product.



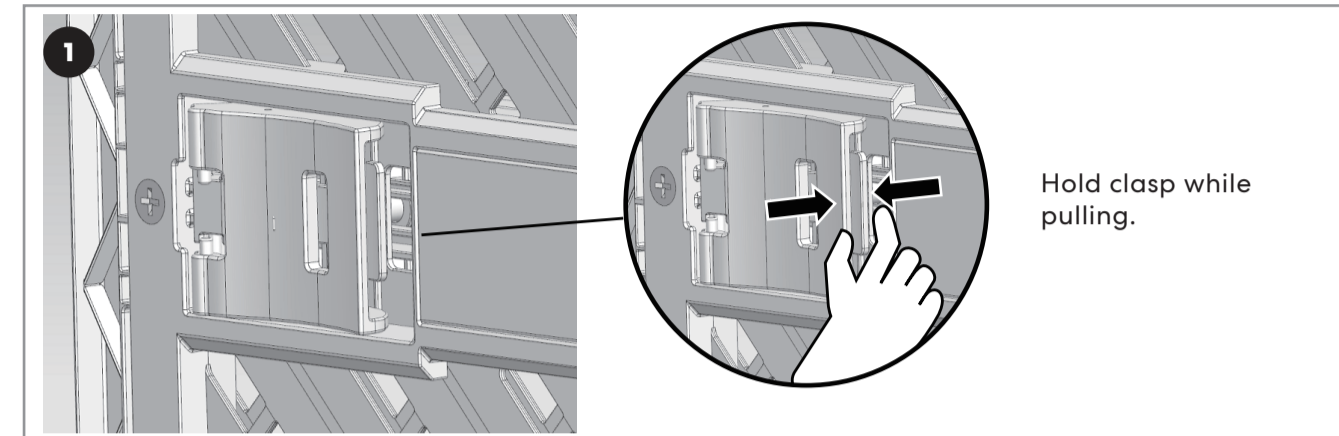
**STEP 2.**  
Pull the gate directly outward to the approximate size of the door frame.



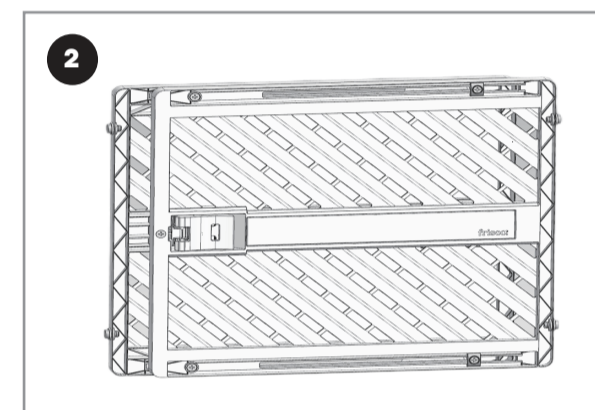
**STEP 3.**  
Push the handle back and forth until the gate is tight against the door frame.



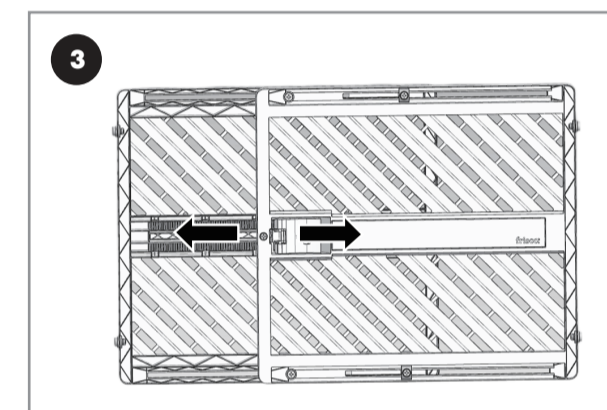
## How to fold the gate



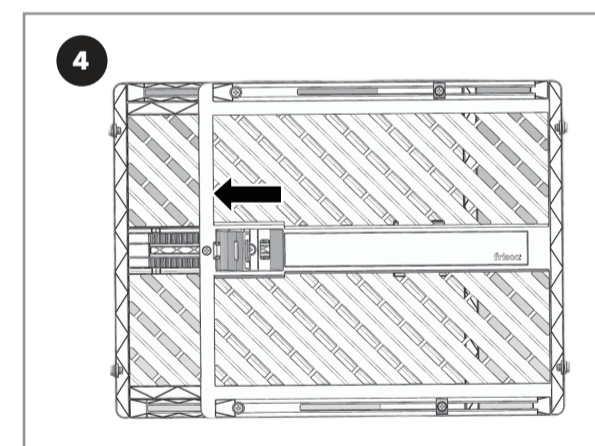
**STEP 1.**  
Pinch the wheel inside the handle and rotate the handle outward.



**STEP 2.**  
Rotate outward.



**STEP 3.**  
Rotate into the circular arc slot.



**STEP 4.**  
Pinch the wheel inside the handle and Slide forward.

## Warnings / Cautions

FOR PETS ONLY. NOT FOR USE WITH CHILDREN.  
Never use at top of stairs.  
Never use as a barrier to a pool.  
Install with locking/ latching mechanisms side away from pet.  
Install as directed.  
Check gate regularly to ensure tightness.  
Stop using gate if any parts become damaged or broken.

## Questions

Questions? Call our friendly customer service anytime.  
We're here 24/7 at 1.800.672.4399

