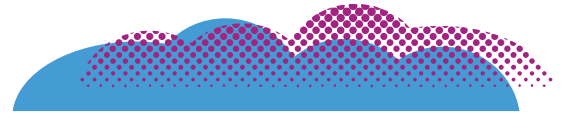
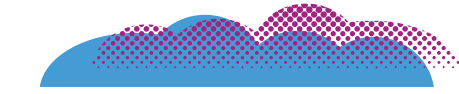


frisco.[™]
better pet goods



EXERCISE PEN

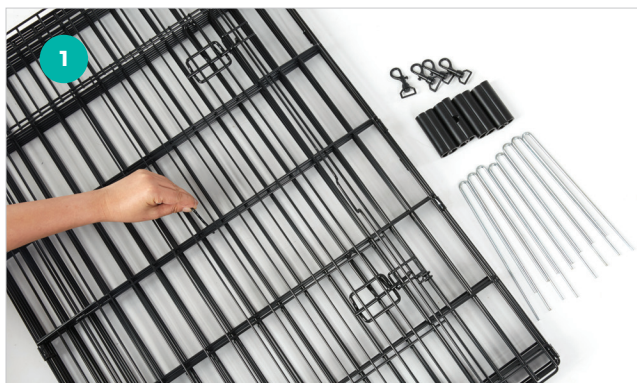
INSTRUCTION MANUAL

PARTS INCLUDED

- ✓ 1 Exercise Pen with 8 Connected Panels
- ✓ 8 Corner Stabilizers
- ✓ 8 Ground Anchors
- ✓ 4 Snap Hooks

EXERCISE PEN ASSEMBLY INSTRUCTIONS

Assembly instructions for 24", 30", 36", 42" and 48" models.



STEP 1 Remove all of the pieces from the box and locate the exercise pen (8 connected panels), the ground anchors and the snap hooks. Unlock the center hook to open the pen.



STEP 2 The exercise pen can be set up in several different configurations. Choose the configuration best suited for your pup's new "playground" or whichever layout works for your space. Make sure the door locks face down and are on the outside of the pen. The pen can always be moved and reconfigured after it has been assembled.

Possible Configurations



STEP 3 (Octagonal configuration only) The corner stabilizers can be used to keep the assembled exercise pen in the octagonal configuration. To attach the stabilizers, straighten two adjoining panels as much as possible. Position the stabilizer with the open notch facing down, toward the outside and centered above the intersection of the two panels. Push down on the stabilizer until it snaps around the top wires of the intersection.

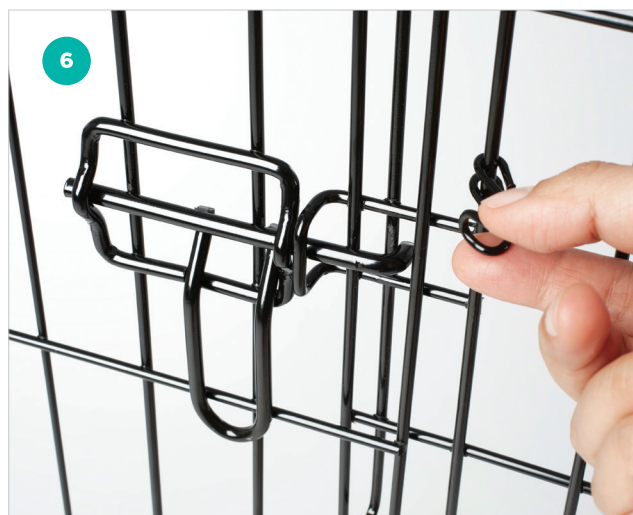
Pull the intersecting panels outward, until the stabilizer snaps into place. Repeat for all adjoining panels.



STEP 4 Connect the two open ends with the snap hooks. For best results, place the snap hooks at the top and bottom and space the remaining two snap hooks evenly along the middle wires.



STEP 5 For added safety when using outdoors, install a ground anchor at the intersection of each panel.



STEP 6 Secure your pup inside his new “playground” by closing the door of the exercise pen and securing both of the slide-bolt locks. Make sure the door closes over the safety latch and both locks are properly secured. For added security, fasten the safety clip.

WEIGHT RECOMMENDATIONS

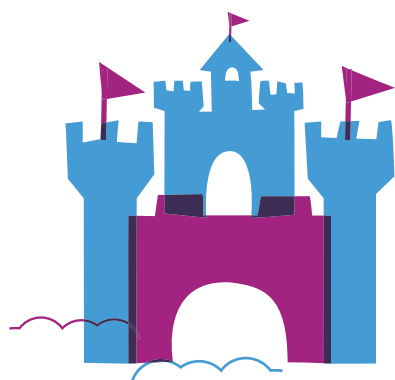
For your pet’s safety, please follow the recommended weight limitations for each exercise pen model. Each exercise pen uses 8 individual panels and each panel is 24-in wide.

X SMALL (24-in tall) **1 to 25lbs**
SMALL (30-in tall) **26 to 40lbs**
MEDIUM (36-in tall) **41 to 70lbs**

LARGE (42-in tall) **71 to 90lbs**
X LARGE (48-in tall) **91 to 110lbs**

MAINTENANCE

To provide your pet with the most comfortable pen possible, clean the exercise pen routinely with a mild, non-toxic cleaner and water.



QUESTIONS?

**CALL OUR FRIENDLY CUSTOMER SERVICE TEAM ANYTIME.
 WE’RE HERE 24/7! 1-800-67-CHEWY (672-4399)**



EXERCISE PEN TRAINING TIPS



INTRODUCTION

Introduce your pet to his new play area. Let him explore it first – on his own time. Don't force him or rush the process. Remember, you want your pet to think of his pen as a positive, safe space of his own, so let his natural curiosity lead. If he seems reluctant, entice him to explore by putting a few treats and his favorite toy inside.



TIME

Acclimate him to it slowly. Once your pet is comfortable, get him used to the idea of staying in his pen little by little. At first, keep him inside the pen by sitting or standing in front of the open door while talking soothingly. Do this for a short amount of time, then gradually increase it. Eventually, close the door, leaving it closed for a short duration, increasing it gradually. Praise him and reward him with treats each time. Remember, positive associations!



BATHROOM

If using the pen indoors, take him out for regular potty breaks, away from his “playground” to do his business. And do it regularly. Smaller and younger animals need to be let out more frequently.



POSITIVE ASSOCIATION

Never put your pet in his exercise pen as punishment. That creates negative associations and will make him reluctant to use it.



PROFESSIONAL HELP

Always consult your veterinarian or trainer with specific questions.

WARNINGS AND CAUTIONS

We care about the safety of your pet, so please **READ AND FOLLOW ALL INSTRUCTIONS** before using a new exercise pen. Improper use may result in serious injury or even the death of your pet.

- To prevent choking and other serious injuries, always remove any collars, tags or leashes from your pet before placing him in his pen.
- Always be sure your pet has had enough food and water before leaving him in his pen.
- If your pet has never been kept in any enclosure, then specific training may be necessary for his safety.
- Consult your veterinarian about whether it's safe to leave food, toys or other items in the pen with your particular pet. They all have unique personalities and habits, so what works for one might not work for another.
- This exercise pen is not designed to restrain dogs who may jump onto or launch themselves into the side of the pen.
- We know how excited pets can get, but do be sure to make sure his paws, snout, ears or tail aren't in the way of the door hinge or latch. Ouch!
- Before your pet enters his exercise pen, make sure that it's secure. Double check that the pen is properly assembled and that all snap hooks and stabilizers are secure before leaving your pet inside his pen to play.
- Never place your pet's exercise pen in direct sunlight. Always make sure there is shaded area if placing the pen outside and provide water to your pet. Serious heat stroke or death could result from an overheated pet.
- If using the pen indoors, do not leave your pet inside his pen for too long. Remember, pets need time to socialize and go potty! Consult your veterinarian or trainer to determine the appropriate amount of time that your pet can safely and comfortably be left in his exercise pen.
- While we are dedicated to providing the best for your pet, Chewy, Inc. is not responsible for any loss, damage, discomfort, injury, illness, death or costs of any kind as a result of or by use of this pen.